

the *LANDMARK* newsletter



LANDMARK
PARK

Vol. XLII Number 1

Spring 2022



Join Landmark Park for our signature event, Spring Farm Day, on **March 19** from 10 a.m.-4 p.m. Turn back the clock over 100 years and experience living history demonstrations of blacksmithing, plowing with horses, quilting and other traditional springtime farm activities. Arts and Crafts vendors will have handmade items for sale. Entertainment will include traditional music, arts and crafts, a Kids Zone petting zoo, chuckwagon and Dutch oven cooking demos and more.

Admission is \$8 for adults, \$6 for seniors and military, \$4 for kids, free for park members and children 2 and under. Sponsored by WOOF Radio, Houston County Farmers Federation, Wiregrass Electric Cooperative, ServisFirst Bank, Wiregrass RC&D and Extencicare.

Alabama Agricultural Museum Now Open!



Thanks to everyone who attended the grand opening of the Alabama Agricultural Museum. What a wonderful day! We had a great turnout and it was heartwarming to see people enjoying the fruits of our labor. Special thanks to Governor Kay Ivey for speaking at our event.

The Alabama Agricultural Museum is now open on Wednesday-Saturday from 10 a.m.-4 p.m. and Sunday from 1 p.m.-4 p.m. (closed Monday and Tuesday). Free with your paid gate admission to Landmark Park.



On **May 21** from 10 a.m.-2 p.m., the Landmark Park Car Show and Touch A Truck will combine for a one-of-a-kind event.

Kids of all ages will have a chance to see approximately 50 trucks and other pieces of equipment up close and learn about their uses at the annual Touch A Truck. Along with the vehicles on display from local companies, representatives will be on site to teach kids about safety. Kids and adults are invited to sit in the drivers' seats and honk the horns on these large pieces of equipment. A "quiet hour" will take place from 10 a.m.-11 a.m. for kids who may be afraid of loud noises. There is no charge to enter a piece of equipment into the Touch A Truck event. Call Laura Stakelum at 334-794-3452 to register or email laurav@landmarkparkdothan.com

On the other side of the park, we will host our annual juried Car Show. The cost to enter a vehicle in the show for judging is \$20. The top 50 vehicles will receive a trophy. Registration will begin at 9 a.m. and the cars can be viewed from 10 a.m.-2 p.m. Awards will be distributed at 2 p.m.

Refreshments will be available. Admission to view all the vehicles is \$7 for adults, \$5 for kids and free for children 2 and under and for park members.



DOTHAN LANDMARKS FOUNDATION



Landmark Park

LANDMARK PARK BOARD OF DIRECTORS Ronnie Davis, President; Wes Crowley, Vice President; Ben Wallace, Treasurer; Chelsea Johnston Miller, Secretary; Nancy Brown, Steven Burgess, Bence Carter, Michael Downing, Alisa Hamm, Stephen Holland, Barbara Jowers, Jeanie Mann, Kenny Moss, Kristen North, Peter Ramsey, Amanda Reed, Leanne Richardson, Clay Williams

LANDMARK PARK STAFF Laura Stakelum, Executive Director; Celeste Conner, Drugstore/Volunteer Manager; David Jay, Special Events/Grounds Manager; Julie Powell, Membership Manager; Tabitha Shumaker, Education Director; Penny Smith, Office Manager; Briana Borders, Drugstore; Hunter Brannon, Sub; Naomi Chester, Drugstore; Austin Ellison, Gate/Drugstore; Brooke Ethridge, Sub; Morgan Golden, Gate/Ag Museum; Blaine Green, Gate/Security; Gabe Hamm, Gift Shop; Niven Krowe, Ag Museum; Timothy McDonald, Gift Shop; Marshall Moss, Maintenance; Kathy Olmstead, Drugstore; Melanie Register, Sub; Sharon Sailors, Office Aide; Anais Shelley, Gate/Drugstore; Tristan Shelley, Sub; Valerie Wise, Weekend Staff



ALABAMA AGRICULTURAL MUSEUM BOARD OF DIRECTORS
Lester Killebrew, President;

ALABAMA AGRICULTURAL MUSEUM STAFF
Laura Stakelum, Executive Director; Kari Barley, Curator; Jay Sayre, Bookkeeper

Spring Break Activities

Learning doesn't have to stop just because school is out. Join us for a fun and educational activity during the week of March 21-25. Due to space constraints, registration is required and can be made online at www.landmarkparkdothan.com. Activities are free with your paid gate admission (\$4 for adults; \$3 for kids, free for park members and children 2 and under). Programs begin at 10 a.m.

MARCH 21: LONGLEAF PINE TREE STUDY

Join our tree expert Ed Lewis for a walk through the forest and learn about the longleaf pine and its ecosystem. Be prepared to walk and enjoy our nature trail! Meets on the deck of our interpretive center.

MARCH 22: SODA SHOP MEMORIES

Join Soda Jerk Celeste Conner for a trip down memory lane with a tour of the Martin Drugstore. Hear the story of the Drugstore, learn how the soda fountain works, explore the artifacts and enjoy a sweet treat. Meet at the Drugstore.

MARCH 23: RACE TO SPACE

Experience the decade-long race that changed the way we view our planet. Join our instructor in our planetarium and learn how the view upward has helped humans downward on Earth. Meets in the lobby of the interpretive center.

MARCH 24: ALABAMA AGRICULTURAL MUSEUM TOUR

Get a behind-the-scenes look at the Alabama Agricultural Museum with curator Kari Barley.

MARCH 25: RADICAL REPTILES

In this program, learn the importance of reptiles as well as their distinguishing characteristics. Guests will learn about the different adaptations reptiles have to survive in their environment as well as what kinds of reptiles can be found in this area. Live snakes and turtles will be joining us for this program.

New! Antique Tractor Plow Day

Landmark Park Antique Tractor Club will be hosting our inaugural Plow Day on March 5 from 10 a.m.-2 p.m. Antique tractors (pre 1960) will be plowing in the field adjacent to the park. Both participants and observers will enter the park through the main entrance and follow the signs to the field. A wagon will be provided to ride in the field and watch the tractors. Antique tractors and implements will also be on display. Bring your lawn chairs.

Admission is \$4 for adults, \$3 for kids, and free for park members and children under 2. There is no charge to bring your antique tractor and participate. Special thanks to Thomas Kirkland for allowing us to use the field. Thank you to Jimmy Jones, Henry County Extension Office, Chris Parker, Auburn University Experimental Station Headland, Alabama.

HAPPY MOTHER'S DAY! Mothers who are accompanied by a child on **May 8** will receive free admission to Landmark Park in honor of Mother's Day.

Longleaf Pine Exhibit Coming Soon

Landmark Park is pleased to announce a partnership with Backstory Educational Media and Kelton Design to install an interactive exhibit on the Longleaf Pine Ecosystem, which will be built in the Interpretive Center Lobby. The exhibit will include artifacts, taxidermy, rocks and minerals, live animals, interactive displays and more. It is slated to be complete by May 2022. Backstory Media has created a panel of local scholars to help tell the story of our native forests.

Founded by writer and curator Phillip Ratliff, Backstory Educational Media brings interpretive design, including exhibits and audio storytelling, to the museum world and beyond. Kelton Design has 30 years experience planning, designing, and building museums and their exhibits. Their works have been featured at the Cook Museum of Natural Science, Vulcan Park and Museum, McWane Science Center, U.S. Space and Rocket Center, EPCOT Center, and more.

New! High Tech Easter Egg Hunt

Bring the whole family to Landmark Park and enjoy our geocache Easter egg hunt on April 2. Search high and low for prize eggs around the entire park, but be on the lookout for the “golden egg” that holds the grand prize: a family membership for a year that can be used as a gift, a renewal or for a new member. Materials for geocaching will be provided. Children under the age of 6 years old must hunt with an adult. The hunt begins at 10 a.m. Meet at the Gazebo by 9:45 a.m. In conjunction with the hunt, we will be dyeing eggs using natural materials grown in our very own Dye Garden. Kids can have a chance to see the beautiful colors that come from plants right here at Landmark Park. Registration is required and can be made online at www.landmarkparkdothan.com.

New Time! Spring Astronomy Night

Join Landmark Park for an evening of stargazing on April 29 from 6 p.m. - 9 p.m. Astronomy Night is an exciting and informative program that gives visitors a view of several stars and planets through telescopes and binoculars on the gazebo lawn. Staff members will help point out winter constellations and visitors will get the chance to experience a starry hayride and campfire. Nightwalks will take place on the boardwalk. Children can enjoy our kid's area and train to be an astronaut! Warm up in the Interpretive Center after stargazing and enjoy out of this world snacks. Until further notice, the planetarium will not be open due to safety regulations and low space capacity. Scouts are welcome, and Astronomy Night meets several requirements for the Astronomy Badge. Admission is \$5 members, \$6 for Scouts and their leaders in uniform and \$8 for nonmembers and free for children 5 and under. Registration is not required for this event.

A Night at the Park Family Camp Out

Landmark Park invites you and your family to experience the Park in a unique way with our 9th annual Night at the Park event. This camping adventure for families features a night walk through the Park, hay rides, s'mores, Nerf War, Water Balloon Battleship, and of course camping in tents. Your adventure begins at 4 p.m. on Friday, May 27 and concludes at 9 a.m. on Saturday, May 29. The fee for the campout is \$20 per person for Park members and \$25 per person for nonmembers. A hamburger and hotdog dinner, s'mores, and breakfast are all included. Families are responsible for their own tents, sleeping bags, and camping gear. Space for the campout is limited and taken on a first come, first serve basis. Registration with payment is required to secure your spot and can be made online at www.landmarkparkdothan.com or calling the Park office 334-794-3452.

New Time! Spring Music by Moonlight

We're doing something a little different this year. Instead of hosting four free concerts in the summer, we are spreading our Music By Moonlight concerts throughout the year. This will allow us to enjoy the cooler weather. The first concert will take place on Thursday March 3 at 7 p.m. featuring the Dothan High Choir and Dothan High School Jazz Band. Pack your picnic and lawn chairs and enjoy an evening of music under the stars. No pets or alcohol, please. Admission to Music By Moonlight is absolutely free.

Spring Forest Tour

Ed Lewis, a local forester and park volunteer, will host a Spring Forest Tour at Landmark Park and provide information about many of the species in the park. You may know Ed from his Crosscut Saw demonstration during Spring and Fall Farm Days. The tour will be mostly on the boardwalk, allowing you to learn about and see both upland and wetland tree species and plants, along with information on how settlers, Native Americans, and modern people make use of our forest resources in the Wiregrass. Participants will receive a booklet that includes pictures and descriptions of species discussed. The session will take place on **April 23** and last about two hours starting at 10 a.m.

This fun and fact-filled program begins in the Interpretive Center Auditorium and registration is required. Space is limited to 20 people. This will be a walking workshop so make sure to wear comfortable clothing and shoes. To reserve your spot, please visit www.landmarkparkdothan.com or call the park office at 334-794-3452. Free with paid gate admission (\$4 for adults, \$3 for kids, free for park members). Sponsored by Wiregrass RC&D.

Volunteer Spotlight: David Baker



David Baker's love of horses came from growing up on his grandfather's one-horse farm in Ohio. He worked the garden and milked the cows. He served six years in United States Marine Corps, including two in Vietnam, before he married Peggy and found their home in the Wiregrass by way of Baptist Bible Institute in Graceville, now Baptist College of Florida. (He has degrees from the school under both names). He's pastored local churches for 40 years and served 14 years with Houston County Sheriff Department as chaplain at the jail.

While ministering to humans, David never lost his affection for horses. He sees firsthand their “impact on people's lives.” He says they can feel our heartbeats. He has taken care of many donated or rescued horses over the years. He currently looks after eight. They are all Haflingers. He knows the genealogy of the breed, but he likes them, because they are low-to-the-ground, and—like David—are good with kids.

David takes his horses to schools and parades, weddings and funerals, “wherever we are invited.” They went to more than 100 events in 2021. Many of those days were spent at Landmark Park, where he has volunteered since 2003. Blue and Dale are the horses he brings most often. They provide wagon rides at field trips and Low Country Boil. They demonstrate hands-on plowing at Spring Farm Day and plow peanuts at Fall Farm Day. They deliver Santa on his sleigh at Victorian Christmas. Some ordinary days, they just show up and surprise guests.

David devotes time to Landmark Park, because it “reconnects me with my past.”

Horses walk about 2.5 miles per hour. Come to Landmark Park and slow down with David Baker.

To volunteer at Landmark Park, call the park office at (334) 794-3452 or email celeste@landmarkparkdothan.com.

Planetarium

Full dome movies will take place on Fridays at 3:30 p.m.; Saturdays at 11 a.m., 1 p.m. and 3:30 p.m.; Sundays at 1 p.m. and 3:30 p.m.; and Mondays at 3:30 p.m.

MOVIE SCHEDULE

MARCH To Space and Back

APRIL Dynamic Earth

MAY Earth, Moon and Sun

Planetarium shows are \$3 per person and free for park members. Please bear in mind, the theatre is dark and sometimes small children will be afraid. Seating is limited and is based on first come, first served.

The Planetarium is also available for field trips. Please register online.

Field Trip Opportunities

Classroom and homeschool teachers, there are several field trip opportunities this spring. All of our field classes are available as well as a few seasonal seasons. In March, we have our Aerospace program (March 16-18; 9-1 PM) where students can learn about planes, aerodynamics, and even launch rockets on our launch pad! April will kick off our "Wonderful Wetlands" program season. Be prepared to get dirty! On April 22, we will be hosting an Earth Day Celebration at a.m.9-1 p.m. with the theme "Recycle Repurpose, Reuse". Finally, let your class learn more about amazing little pollinators at our "Life of a Honeybee" program. Limited space per day. For more information, check out our website under the education tab.

Summer Camp Registration

Summer is coming. Are you ready for camp? Come Join Landmark park for a wide variety of adventures at one of our summer camps! From aerospace to farming history, these camps have something fun for every interest. Each camp will include hands-on activities plus games, art and crafts, new friendships and more! Members may register for Summer Camps on March 7 at 9 a.m. and nonmembers on March 14 at 9 a.m. Members receive a discount and early registration on summer camps. This year, T-shirts are included in your price. Weeklong summer camps run Monday-Friday in June and July for ages 4-12. For details on available camps, to register and to pay, please visit www.landmarkparkdothan.com Landmark Park will be adhering to guidelines set forth by the CDC to keep everyone as safe as possible from COVID.

Don't Forget About These Regularly Scheduled Events

The following events take place monthly and are free with your paid gate admission (\$4 for adults, \$3 for kids, free for park members).

DULCIMER LESSON AND JAM The Landmark Dulcimer Club has a jam and practice session every **first Saturday of the month at 1 p.m.** You do not have to know how to read music! We prefer you bring your own Mountain Dulcimer but we do have a few practice dulcimers you can borrow if you want to give it a try. Show your instrument and get in for free! Meets in the Interpretive Center Auditorium.

REPTILES Landmark Park hosts a Reptile Feeding every **first Sunday at 4 p.m.** Meet our snakes and turtles and learn why these animals are so important to the environment. Interpretive Center Lobby.

WOODTURNING The Wiregrass Woodturners host a club meeting and woodturning demo every **second Saturday of the month at 9:30 a.m.** The public is invited to visit and learn how to make beautiful wooden items turned on a lathe. Wiregrass Woodturner members get in free. Meets in the Interpretive Center Classroom.

SIT AND SEW Every **second Saturday from 10 a.m.-3 p.m.**, join the Evening Star Quilt Guild with your textile-based crafts for an informal sewing circle. Free for Quilt Guild members. Space is limited, first come first served. Meets in Interpretive Center Auditorium.

PICKIN' IN THE PARK A bluegrass/gospel/country jam session takes place every **second Saturday of the month at 10 a.m.** Join musicians for a bluegrass, country and gospel jam session. Visitors are welcome to listen or participate. Show your instrument at the gate to receive free admission. All ages and skill levels are welcome.

ANTIQUE TRACTOR CLUB The Landmark Park Antique Tractor Club will meet on the **third Saturday of each month at 9:30 a.m.** in the Interpretive Center Library. This club has been established as a way for tractor enthusiasts to come together to share pictures of tractors, share interesting articles, trade/sell and enjoy the fellowship. The club participates in several tractor shows and tractor pulls during the year. To become a member, visit the meeting or email David Jay, david@landmarkparkdothan.com. Mention this meeting at the gate to receive free park admission.

BLACKSMITHING The Wiregrass Forge will present a Blacksmithing Demo every **third Saturday of the month at 10 a.m.** Watch as metal is heated and shaped into a variety of items.

HEARTH COOKING Join Alisa Hamm and Wes Crowley in the Watson Cabin on the **fourth Saturday of JANUARY, FEBRUARY, MAY, AUGUST, AND NOVEMBER from 10 a.m.-noon** and watch as they cook over an open hearth.

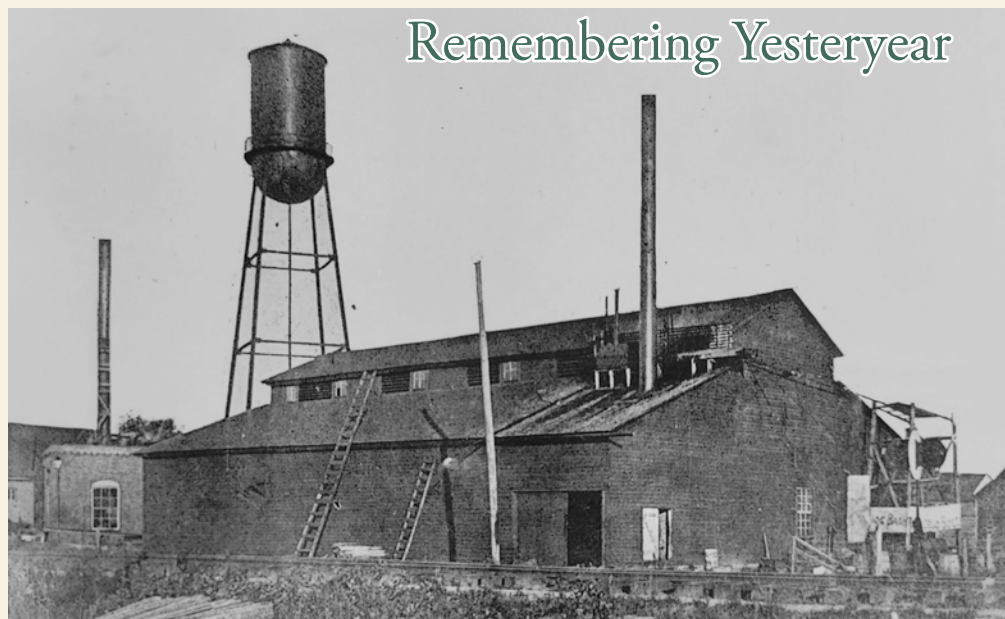
FIFTH SATURDAY FREEBIE Admission will be waived every **fifth Saturday of the month.** These don't come around often so make sure to take advantage of this opportunity!

Thanks to the generous support of All In Credit Union, Landmark Park will offer free admission to active-duty military personnel and their families from **Memorial Day through Labor Day** as part of the nationwide Blue Star Museums Initiative.

Landmark Park is taking it one step further this year. In addition to active duty military, retired military and their families can also take advantage of the opportunity for free admission. This includes free admission for the active and retired military and up to five family members.

“As an organization founded by servicemen, we understand the dedication and sacrifice of our military to give their all to a mission, their country and their families,” says Kathy Scarbrough, VP of Marketing at All in Credit Union. “That is why All In Credit Union is proud to serve as the signature corporate sponsor for the “Blue Star Plus” program.”

The Blue Star Museum initiative is a partnership between Blue Star Families, the National Endowment for the Arts, the Department of Defense and more than 2,000 museums across the country. It provides free admission to active-duty military identification holders and up to five immediate family members. To further benefit the military families in our area, Landmark Park is happy to extend this discount to retired military and their families as well.



Remembering Yesteryear

Excelco Bottling & Ice Company Power House in Rear, Headland, Alabama

Artifact Exploration



The “Pine Burr” is the quilt pattern for the State of Alabama. You can find this piece in the cabin of the brand new exhibit of the Alabama Agricultural Museum!

Veterans Gardening Program

The Veterans Gardening Project will continue this season at the designated community garden at the back of the park. This project will build and strengthen the local food system while providing veterans and their families the opportunity to come together for a hands-on gardening project.

The program will host a series of workshops that will cover the basics of gardening as well as other topics for those who are more experienced. Let us know you are coming to the workshops by registering at www.aces.edu/go/vetsgardendoth or by calling the Houston County Extension Office at (334) 794-4108.

The garden will be open during Landmark Park’s normal business hours to any veteran who wishes to come out and work in the garden when there is not a workshop. There is free entry for those working in the garden and tools are available for use. If you have not participated in a workshop with us before and would like to come out to the garden, please contact Kerry Steedley at kes0150@aces.edu for more information before going. This project was made possible through a partnership between Landmark Park, Wiregrass RC&D, Alabama Extension and our hardworking volunteers.

MARCH 8 Introduction & building raised beds construction techniques for various uses

MARCH 22 Greenhouse use & starting transplant seeds

APRIL 5 Transitioning from winter to spring, fertilizing & planting day 1

APRIL 19 Planting Day 2

MAY 3 Trellising

MAY 17 Mindfulness in the Garden

MAY 31 Harvesting and Produce Nutrition

JUNE 14 Pests and Disease



NEW MEMBERS

Welcome to our new members who joined from Nov 15-Feb 15. To all our previous members who renewed, a sincere thank you.

FAMILY MEMBERSHIPS

Alex and Sabrina Arnold
Garrett and Katie Barrentine
Shane and Jennifer Blevins
Frank and Shannon Breaux
Taylor and Ashley Caldwell
Johnny and Jill Champion
Eric and Kayla Chandler
Deb Danford
Nick and Brooke Darts
Joseph and Allison Drake
Tony and Misti England
Tony Floyd and Karen Simmons
Krystal Fowler and Craig Kornegay
Don and Maura Fuda
Michael and Kimberly Gorland
Robert and Jeri Grant
Wayne and Dee Dee Griffin
Ellis Harville
Josh Harville
Hunter and Lauren Hayles
Ronald and Anne Kikendall
Justin and Chelsey Kirkman
Drew and Josie Kitch
Mike and Malinda Langlois
Joey and Dolores Monroe
Jeffrey and Danielle Morgan
Neil and Cami Morgan
Len and Sarah Muller
Kit Patrick
Brian and Tammy Preston
Kim Preston and Valerie Simmons
Sylvia Quattlebaum and Jennifer Dean
Durwin and Judy Stewart
Phillip and Codie Stough
Whit and Stephanie Taylor
Jimmy and Jennifer Warden
Fred and Linda Warren
Jay and Jeanne Watson
Jack and Keely Weber
Phillip and Jaci Weems

CORPORATE MEMBERSHIPS

Houston County Farmers Federation
Flowers Insurance

Memberships make
great gifts!

Call 334-794-3452
and ask for Julie.

Thank You

ALABAMA AGRICULTURAL MUSEUM VOLUNTEERS

The Byrd Family, Mike Roberts, David Baker;
Jon Beeson, Patsy Davis, Samantha Aspero

ANNUAL APPEAL

Jerry Adkinson, Charles and Angela Allgood,
Philip and Martha Atkinson, George and
Helga Bable, Kim Bee, Buddy Bennett, Mike
and Missy Blalock, Tom and Sandy Boyle,
Buzz Brewer, Benny Buchanan, Mr. and Mrs.
Cy Butler, Charles and Marie Camp, James
and Peggy Carter, Brooks and Jan Cavell, Judy
Clardy, Dorothy Clark, Craig and Florrie Coe,
Bob and Nancy Coffman, Roy Cooley, Cathy
Corbitt, Nancy Cundith, Larry and Betty
Dowling, Gary and Donna Drews, John Farmer,
Robert and Carol Flowers, David and Sigrid
Gayle, Jean Gilliam, Wayne Gilmore, Betty
Graves, John and Rebecca Haley, Wayne and
Claire Helms, George Herring, Susan Herring,
Carolyn Hornsby, Ed and Jan Jackson, Mr. and
Mrs. Robert Johannesen, Tim and Merle Jordan,
Ed and Mary Knobeloch, Leslie Krietemeyer,
Kent and Janie Lane, Allen and Ronnie Latimer,
Alan and Susan Livingston, Cynthia Lumpkin,
Jerry and Judy Lurie, Mr. and Mrs. Wallace
Malone, Michael and Renee Mandella, Mark
Donnell Farms, Don and Linda Marley, Leon
and Barbara Minsky, Jeff and Dale Money, Mike
and Libba Murphree, Jeff and Fran Norman,
The Nature Gallery, Marty and Liz Olliff, Hugh
and Linda Overton, Kevin and Mary Harriet
Patton, Phyllis Poole, Bobby and Barbara Rains,
Peter Ramsey, Yancey and Melanie Register,
Craig and Ginger Scarbrough, Bill and Gloria
Shealy, David and Cindy Sheffield, Cecil R.
Simmons, Larry and Connie Skeen, Lela F.
Smith, David and Virginia Spisak, Scott and
Kay Stevens, Hildegard Stephens, Heath and
Malorie Thompson, Grady Thrasher and Kathy
Prescott, Paul and Cindy Truran, Ken and Susan
Wallace, Theron and Jane Wells, Marcella West,
Ted and Malissa Williams, Loretta Womack, Pat
Yeomans, Dr. and Mrs. Walter Young

DECORATING WORKSHOP

Wiregrass Master Gardeners Association, Jack
Weber

HOLIDAY PHOTOS

David Baker

IN KIND DONATIONS

Charles Brasher, Russell Hardin, Laura Stakelum

MONTHLY PROGRAM VOLUNTEERS

Wiregrass Woodturners, Landmark Dulcimer

Club, Evening Star Quilt Guild, Wiregrass
Beekeepers, Wes Crowley, Adeline Crowley,
Alisa Hamm, Joey Dalton

OUTDOOR PROJECT VOLUNTEERS

Mike Roberts, Wiregrass Master Gardeners
Association, Wiregrass Master Naturalists,
The Byrd Family, Patsy Davis, Carole Ball,
Irene Tucker, Jimmy Jones, Paul Lambi, Tom
Boyle, David Baker, Wiregrass Beekeepers,
Mike Robert, Barbara Jowers, Jack Weber,
Keely Weber, Bence Carter, Alabama Extension
System, Candace Bryson

SEED SWAP

Cathy Hinsely, Sue McCabe, Phyllis Poole,
Sara Jo Adams, Ginger Holmes, Faye Carnley,
Cheryl Hatcher, Helen Sue Kemp, Carolann
Roussin, Glenda Hays, Jan Shirley, Judy Clardy,
Linda Cantlin, Lisa Lopez, Patricia Jerkins,
Susan Rigsby, Barbara Jowers, Letitia and Jeff
Avera, Carver Museum, Maura Fuda, Wiregrass
Beekeepers, Houston County Extension System

TRIBUTE FUND

In Memory of Bill Lee

By: Arthur Gardener, Rufus Davis, Arthur
Moore

In Memory of Priscilla the Tarantula

By: Ronnie Lattimer

In Honor of Laura Stakelum

By: Regis Peoples, Cathryn Hall, David
Richardson, Katy Blankenhorn, Aileen Clayton,
Jan Shirley, Alison, Bunge-Shumaker

VETERAN GARDEN

Sponsored by Wiregrass RC&D

Hosted by Alabama Cooperative Extension
System; Kerry Steedley, Anna Cornelius

VICTORIAN CHRISTMAS

Sponsored by Wal Mart

Haley Godwin, Dothan High School Show
Choir. Mike Roberts. Joe Watson. Tim Faulk.
David Baker. Landmark Park Dulcimers. Steve
Lowrey, Wiregrass Forge, Alisa Hamm. Wes
Crowley

WINTER ASTRONOMY NIGHT

Terry Teeter, Rodger Harold, David Baker,
Dana Peters

Spring Quilt Retreat

Led by Sherry Burkhalter, the annual Quilt Retreat will be held on March 25 from 5 p.m.-9 p.m. and March 26 from 9:30 a.m.-4:30 p.m. in the Stokes Activity Barn. This is a great opportunity to brush up on your quilting techniques and learn something new with your fellow quilters. Cost for the retreat is TBA and includes supper Friday, lunch Saturday, drinks and snacks. Bring your sewing machines and supplies. Space is limited and registration is required. Call Sherry at 334-790-9045 or visit her shop, Quilted Creations, on the square in Headland.



Boardwalk Renovations Underway



If you have visited the park recently you have probably noticed the extensive work that has been done on the boardwalk and dock at Landmark Park. Now that the repairs have been completed, new exhibits showcasing our Native American heritage are being installed in the four pavilions along the boardwalk. This exhibit is made possibly through grants from the Poarch Creek Indians, Wiregrass Foundation, Alabama Humanities, and the Woodpile. Special thanks to volunteer Candace Bryson for her help in leading this project.



Landmark Park and the Alabama Agricultural Museum staff looks forward to bringing history to life for the public this year!

Let's Get Married!

Thanks to our supporters for voting for Landmark Park as the best place to get married in the Dothan Eagle's Best of the Wiregrass poll! Landmark Park came in second in this poll. The park has several beautiful venues available for rent for your special occasions, including an historic church, 8,000 square foot activity barn, gazebo, covered picnic pavilion and Auditorium. Visit www.landmarkparkdothan.com or call 334-794-3452 for details on rentals.



*"The Lark" is published quarterly by Landmark Park for the members of Dothan Landmarks Foundation, P.O. Box 6362, Dothan, AL 36302.
430 Landmark Dr., Dothan, AL 36303*

Non Profit Org.
U.S. Postage
PAID
Dothan, AL 36302
Permit No. 447



Post Office Box 6362
Dothan, Alabama 36302-6362
(334) 794-3452
www.landmarkparkdothan.com
RETURN SERVICE REQUESTED

LANDMARK PARK TRIBUTE FUND

To Honor or Remember Family, Friends and Loved Ones

As a special tribute to family and friends for important occasions throughout the year—a birthday, an anniversary, graduation, a “get-well” wish, or expression of sympathy—a gift to Landmark Park’s TRIBUTE FUND is a very meaningful and personal gift. Contributions are fully tax-deductible and are placed in the park’s trust fund, thereby providing an unending gift to Landmark Park that will also serve as a lasting tribute to the person you wish to honor. Personal acknowledgment is sent to the individual honored, without reference to the size of the gift, and your tribute is listed in the park’s newsletter, “The Lark.”

I wish to contribute \$_____ to Landmark Park.

I wish my gift to be in memory/honor of _____

Occasion: Birthday Anniversary Memorial Other

Donor’s Name: _____

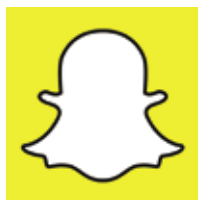
Address: _____

Please Notify: _____

Address: _____

Make check payable to: **Landmark Park** and mail to:
Landmark Park • P.O. Box 6362 • Dothan, AL 36302

Find us on your favorite
Social Media platforms!



334-792-8408
955 Tate Dr.
Dothan, AL 36301